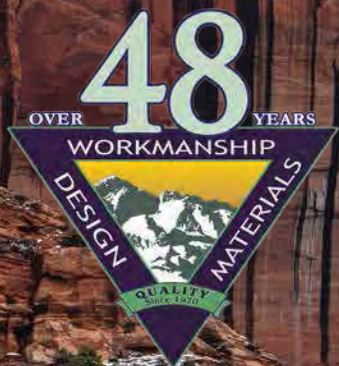




C A T A L O G U E



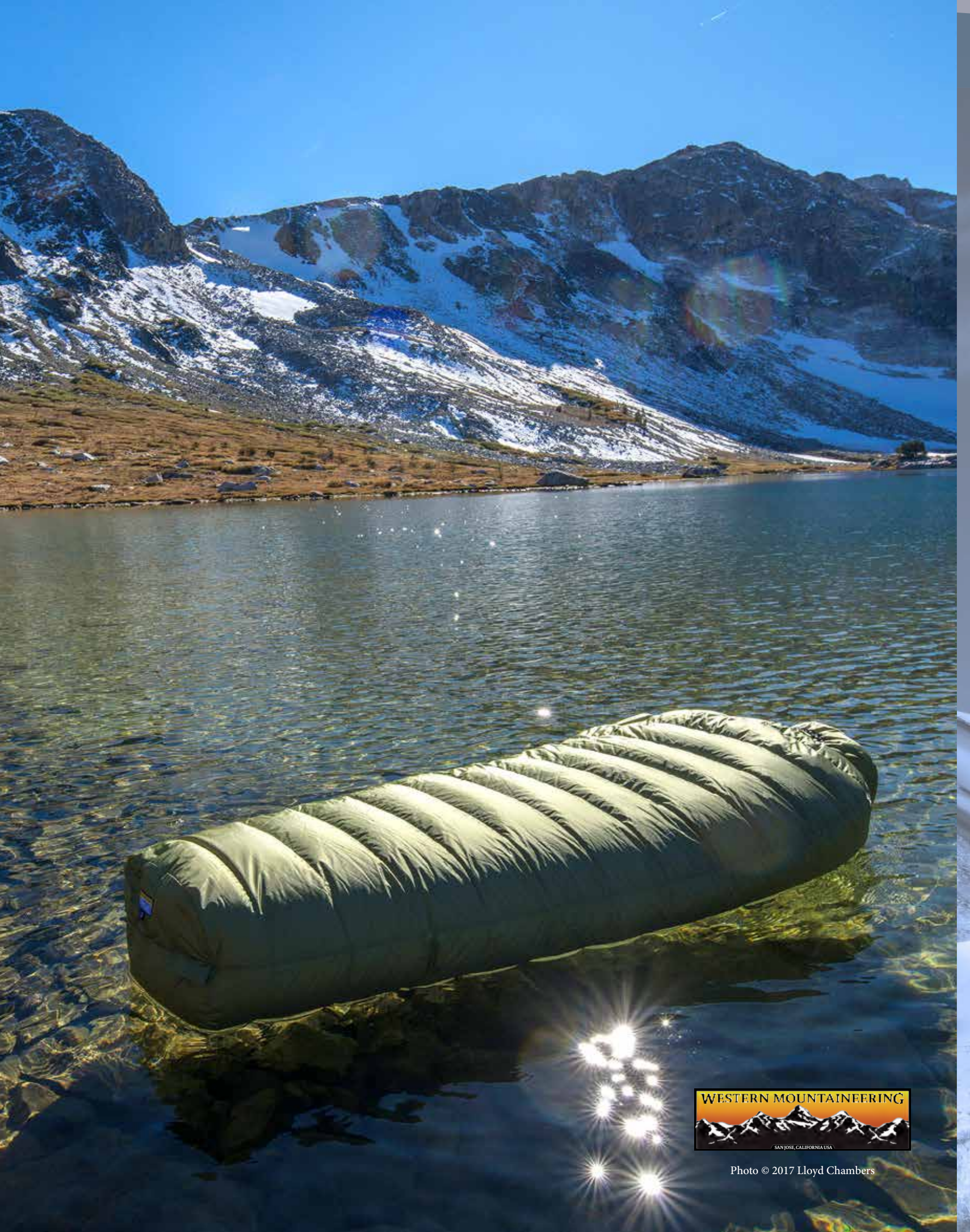


Photo © 2017 Lloyd Chambers

ABOUT WESTERN MOUNTAINEERING

Western Mountaineering is built on three tenets: Design, Craftsmanship and Materials. Our mission is to perfect all three in order to make the best between you and the elements. We've refined our designs over the past 48 years by always putting longevity first. We've cultivated incredible craftsmanship through manufacturing in house in San Jose, California. Almost all of our sewing staff have been making WM products for over ten years, some going on 25 years or more. Our manufacturing talent is unprecedented in the world of outdoor gear production. We are committed to working with trustworthy suppliers to ensure the quality of our materials and are constantly pushing the envelope to source materials that are lighter, more durable and weather resistant. The combination of these principles is a refined product that provides world class performance.



WM founders-circa 1972

SOURCING COMMITMENT

As a manufacturer of products which are filled with goose down, we are very concerned for the welfare of all geese that provide the insulation that is ultimately used in our products. The down we purchase does not come from geese that have been live-plucked or subjected to force feeding. We have a unique direct contact in Eastern Europe which sources our plumage from a mother goose farm. This is a location where the geese are raised for breeding as opposed to strictly being raised for poultry. This means that their life span is much longer and they do not live their life in confinement or cages. These geese have relatively little interaction with humans on a day to day basis since the plumage is gathered from their nesting area while the geese are out on other parts of the property. We take the time to visit both the farm and the processor, and have always found the geese to be in good health, with a clean, covered nesting area on a large rural property with a stream and several ponds.

Water Repellent Down

In recent years technology has emerged for treating down to make it more water resistant than it already is. We are in the process of conducting our own long term testing on goose down which has been treated with a "water repellent" finish. While we remain hopeful that the technology will prove to be useful, our products are designed to last a long time. For this reason we feel that further testing is needed before we can determine how these treatments perform over many years or decades. The down we use can last a quarter or a half century, and at this point we haven't seen any product which can match the amazing longevity and performance of our pure and naturally harvested goose down.

Background photos by Lloyd Chambers © diglloyd.com

DESIGN FEATURES

ABOUT OUR PRODUCTS

With over 30 bags to choose from we have made it easier for you to choose the best fitting bag. In the back of this catalog there is a spec sheet which is great for comparing different bag sizes. By using the shoulder, hip, and footbox girth measurements it is easy to determine what bags fit your body and sleep style.

DIFFERENTIAL CUT

Mummy bags are made with an inner shell fabric cut narrower than the outer shell. This is called differential. Its purpose is to give the inner shell a smaller circumference than the outer shell. This eliminates extra fabric inside the bag that could lead to cold spots. Most of our mummy bags are differentially cut to promote proper lofting and to protect against down compression when knees or elbows push against the inner fabric. Semi rectangular bags are not cut this way so that they can be unzipped to lay flat.

REVERSE DIFFERENTIAL HOOD

Our hoods are cut so that the inside of the hood is made with a larger piece of fabric than the outside. This creates a hood with loose down filled fabric which surrounds your head. That way you can enjoy warm insulation around your head and face without having to cinch the hood tight. Also, the extra fabric can be adjusted to create a down filled ruff or bill across your forehead.

CONTINUOUS BAFFLES

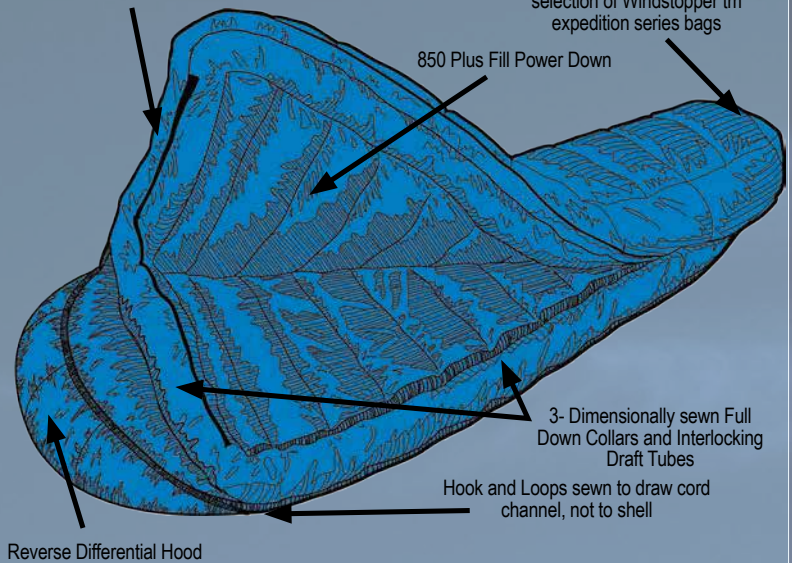
To ensure a broad temperature range we build our 2 and 3-season bags with continuous baffles which encircle the bag. This allows you to shift the down insulation from one side of the bag to the other. During hot summer nights, you could shift the down from the top of the bag to the bottom so there is less insulation on top of you. When the weather is cold, you can move the down to the top of the bag. Just open the bag flat and push the down with your hands from one side to the other. This adjustment allows you to maintain a comfortable temperature inside your bag. We sew continuous baffle bags with 5 1/4" baffle spacing so that unintended down migration during the night is kept to a minimum. Our continuous baffles are fixed to the material in a "slant box" configuration because it provides the best distribution of down across the width of the bag given the differential cut.

PASSIVE TOP COLLAR

Heat Loss from the neck area is common while moving inside your bag at night. To help minimize this heat loss, our Megalites are outfitted with a Passive Top Collar. This 3-dimensional collar extends from the zipper across the neck to seal over your shoulders and keep warm air from escaping.

Full down Collar uses elastic cord and Hook and Loop closures that close on themselves when not in use.

Sturdy 2.4 oz. fabric inside foot selection of Windstopper™ expedition series bags



Reverse Differential Hood

FULL DOWN COLLAR

When a full seal from the elements is called for, we pull no punches. Our Full Down Collar is a 3-Dimensionally sewn down filled tube that wraps snugly about your neck. It is sewn with two widely spaced seams so that it is a solid baffle of down, and not just some sort of flap. It uses an elastic draw cord to cinch it tight and in our Gore Windstopper™ bags the entire collar is made of Gore Windstopper™ fabric. You'll find the full down collar on all of our Gore Windstopper™ bags and other bags where heat retention is critical.

SIDE BLOCK BAFFLES

In cold weather you want insulation to stay on top of you without any chance of shifting. This task is accomplished with a side block baffle made with netting, that runs the length of a bag on the side opposite the zipper. Our winter bags are built with a V-Block Side Baffle. This V-Block design does two things, it provides a wide pie shaped chamber of down along the right and left sides of the bag, and by increasing the number of down filled chambers in a bag, the size of the chambers decrease. Smaller chambers provide better down control. Further, the shorter baffles that cross your chest lie flat so that down can't migrate to either side.

STUFF SACKS AND STORAGE BAGS

All of our sleeping bags come with a stuff sack and a storage bag. The stuff sack is made with a waterproof urethane coated material and has a built-in handle sewn into the bottom. When stuffing, always push your sleeping bag to the very bottom of the sack. You may find that our Gore Windstopper™ bags will stuff easier if they are turned inside out. Use the stuff sack only when transporting your bag. Our storage bag is a large volume bag that allows your sleeping bag to be stored fully lofted. This allows the down to breathe and stay lofty. Your sleeping bag should always be stored in this large bag. This is an important way to protect your investment and to prolong the life of your sleeping bag.

ATTENTION TO DETAILS

Added together, it's all these little details that make a great sleeping bag and push Western Mountaineering over the top! For instance, all of our winter bags with the Full Down Collar are made with Interlocking Double Draft Tubes. When the bag is zipped these large stoutly filled tubes rest side by side rather than on top of each other. That way these Interlocking Draft Tubes retain their full loft without being compressed as the zipper closes. When a bag has a single draft tube it will hang from the top so that the zipper won't inadvertently be exposed while moving inside the bag. A Dacron

stiffening tape is sewn alongside each zipper to prevent snags. Our Hook and Loop closures are backed with fabric to prevent fraying and are placed on non-integral parts of the bag like the draw cord casing.

We have created a series of icons that represent features found on Western Mountaineering sleeping bags. At a glance you will be able to tell which bags have single or double draft tubes, passive or full down collars, continuous baffles and the type of side block baffle. These icons appear throughout the catalog for each sleeping bag.

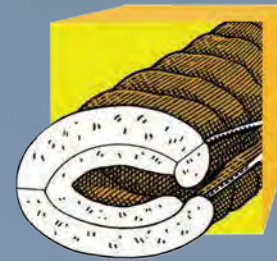
DESIGN FEATURE ICON KEY



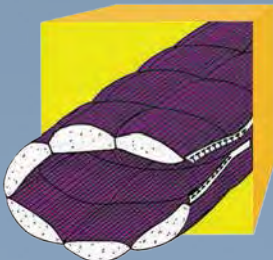
Continuous Baffle, no draft tube:
Mitylite (sewn through)



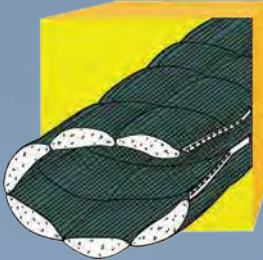
Continuous baffle with full collar & draft tube:
Ultralite, Alpinlite, Versalite
Apache MF, Badger MF, Antelope MF, Kodiak MF, Sequoia MF, Apache GWS, Badger GWS, Antelope GWS, Kodiak GWS, Sequoia GWS.



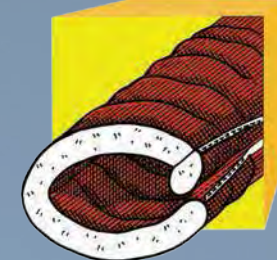
Side Block Baffle w/draft tube & full collar:
Bristlecone MF, Cypress GWS



Box Quilt with Vertical top baffles icon:
Highlite, Caribou MF



Box Quilt Sewn-Through icon:
Everlite



Continuous Baffle with draft tube:
Tamarack, Terralite, Alder MF, Sycamore MF, Ponderosa MF



Continuous Baffle w/ passive top collar & draft tube:
Megalite



V-Block Baffle with single draft tube & full collar:
Lynx MF, Lynx GWS



V-Block Baffle w/two (offset) draft tubes & full down collar:
Puma MF, Puma GWS, Bison GWS



Continuous Baffle chamber with no zipper:
Semilite



Continuous Baffle with insulated draft yolk and open bottom:
Nanolite, Astralite



Photo © Christoph Michel

Why We Choose Down

Since our beginning, Western Mountaineering has always felt that high fill power goose down is the best insulation material available. This natural fiber, while highly variable in nature, provides more warmth per ounce than any other material. Down's unique structure is responsible for its tremendous ability to trap warm air. Its filaments are divided and sub-divided to reach out into its surroundings to create a dead air space that slows the movement of warm air. By its very nature, a down filled sleeping bag is as much as 35% lighter than its synthetic counterparts. It is more compressible than synthetic insulations and provides the most warmth with the least bulk. Down also is known to have the greatest longevity, and it will outlast any other insulation by 3 to 5 times, making it the most economical choice after its initial investment. Down sleeping bags drape luxuriously over the body and ensure good coverage and warm contact. There is nothing else like down.

Fill Power Testing

To perform a certified test, a sample of down is sent to an independent laboratory. There the sample is placed in a large screened box and conditioned for 3 days before being tested. During this time the sample is stirred, mixed, steamed and blown with warm air. This conditioning is intended to stabilize the sample so that consistent results may be obtained. Then a 1 ounce sample is drawn and placed into a measuring cylinder. A piston weighted to 68.4 grams is placed on top of the down and when it comes to rest the volume of the down is measured in cubic inches. In spite all of that conditioning, the laboratory will publish their results with a plus or minus 5% error. This is a full 10% range and for an 850 fill test, results in an 80 point variance! Furthermore, conditioning actually improves the sample by drying and blowing out dust and other small particles while the down at the factory remains unconditioned! This is what we mean by an Optimistic fill power rather than a Practical fill power rating. If two bags have the same internal volume, the bag with more loft will be warmer.



If two bags have the same loft, the bag with the smaller internal volume will be more efficient and warmer. If two bags have the same loft and internal volume, but one has a lot more down fill by weight, then check the density of down inside the chambers and the fill power claimed by the manufacturer. Well filled down chambers provide better down control.

850 Plus Fill Power Goose Down

Western Mountaineering uses the highest lofting premium goose down available for all of our sleeping bags. Our fill power claim of 850 Plus is meant to be a realistic estimate given the variability of the product and the nature of fill power test methods. In reality, our certified tests most often are higher than what we claim. This is because the certified test methods provide the most optimistic fill power rating and do not represent what is being put into your sleeping bag. Recently, these testing methods for fill power changed again making the fill power ratings even higher. Now, each sample of down will receive a tumble dry before it is given several days to loft up in a perfectly controlled environment. During that time it is enhanced by using a blow dryer to boost loft. Your sleeping bag will never receive that kind of treatment, and this is why we claim a more practical fill power. Rest assured, we use only the finest goose down available.



Extremelite™ Fabrics

Our search never ends for the lightest weight downproof fabrics to feature in our special use ExtremeLite™ bags. For these bags we have worked with suppliers to develop extremely high thread count fabrics with ultra lightweight yarns not seen in the sleeping bag market before. These fabrics are constructed from 7denier to 12 denier yarns that are extremely lightweight at with up to 500 threads per square inch. Our ExtremeLite™ series features 14 models which weigh between 11 ounces and 2 pounds! These bags are designed for special applications where compressed volume and weight are critical factors. Although some durability is sacrificed with these lighter fabrics, our ExtremeLite™ bags are perfect for the lightweight specialist. Our lightest weight jackets and vests also feature a very lightweight shell fabric. These materials weigh less than 1 oz. per square yard or less than 26 grams per square meter, allowing us to make some of the lightest insulated products you will find. Extra care should be taken to avoid puncturing or damaging the fabric on products made with these specialized lightweight fabrics.



MicroLite XP™ Microfiber

A microfiber fabric is very water resistant because of its combination of high thread count and makeup of dense yarns. Each microfibre yarn has many more filaments than a normal yarn of equivalent size.

Woven into high thread count material, it becomes a fabric that really keeps wind and water out. There is no coating or laminate on this material, making it highly breathable. The density of yarns and high thread count are construction features that won't wear off, wash out or delaminate so this fabric will remain highly water resistant, downproof and very breathable for decades.

Our MicroLite XP™ is a highly technical microfiber produced to our specifications with more than 400 densely packed 20 denier yarns in a perfectly uniform weave for the ideal balance of water resistance and breathability. We worked closely with our supplier to develop this fabric which is highly water resistant, super breathable, and very light weight. Its hard to imagine a more impressive combination of performance characteristics in a shell fabric.

Gore Windstopper™ Fabric

Our Gore Windstopper™ fabric, manufactured by W.L. Gore and Associates, is the most weather resistant fabric we use on our products and provides the ultimate protection against moisture and condensation. We use the lightest and most compressible Gore Windstopper™ fabric available and it has a very soft hand compared to other laminates. The breathability of the Gore Windstopper™ membrane reduces the threat of condensation while remaining plenty water resistant for the needs of a sleeping bag. Use Gore Windstopper™ sleeping bags in damp or extreme conditions to prevent external moisture from reducing down performance. Some winter conditions may require the use of the Hot Sac™ vapor barrier liner to provide the most optimum performance and preservation of loft on extended trips.



YKK Zippers

We use a #5 YKK coil zipper with two dual direction pulls and locking head. This zipper is lighter weight and less bulky than the old #7 zipper. The coil construction has a less abrasive surface in the event of zipper snags and provides years of trouble free operation.

Baffle Material

Pre-cut no-see-um netting is what we use for all internal baffles. This material is firm to prevent distortion, but flexible enough to insure compressibility. It is extremely lightweight and durable.

Water Repellent Treatments

All of our outer shell fabrics are finished with a DWR, (Durable Water Repellent) that is rated as 80/20. This is an industry measure of durability that suggests that 80% DWR is retained after 20 washings. In reality this rating is for a lab test procedure only and does not take into account sweat and dirt which compromise the treatment. An after market treatment can be applied later to restore water repellency as needed.

Abrasion Resistant Taffeta

We use a more durable fabric at the foot sections of our two expedition Gore Windstopper™ bags. This material is woven with heavier yarns so the inside of your bag is protected when you store gear or boot liners at the foot of your bag. The Gore Windstopper logo is a registered trademark of W.L. Gore & Associates. Inc.

EXTREMELITE™ SERIES



NanoLite

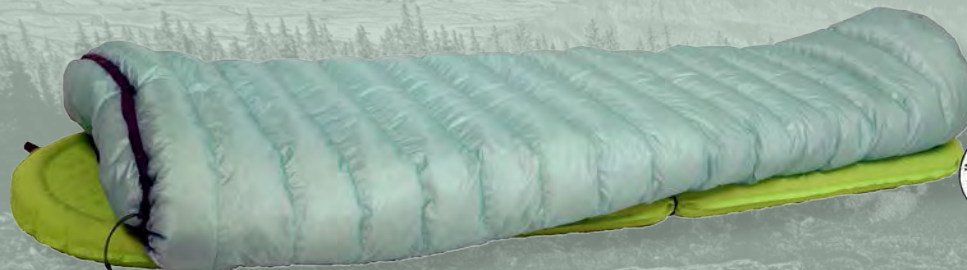


The Nanolite and Astralite quilts are high performance sleep systems designed for the ultralight fanatic. Compatible with any mummy shaped sleeping pad, they boast high functionality and light weight performance. Current quilt designs suffer from poor closure, leading to excessive heat loss. We've addressed this with the addition of a top collar that drapes around the shoulders of the user, locking in core body heat. The Nanolite & Astralite's unique but simple bottom closure system boasts full closure from shoulder to foot. This closure system also allows for shoulder and hip girth that fit a wide range of sizes and body types.

Lengths of these bags are unique due to their non hooded design. The regular length is made to fit regular length pads while the long length is designed for long pads. The bags themselves are 5'8" (175cm) for the regular and 6'4" (195cm) for the long. One of our 5'8" quilts should fit just over the shoulders of a 6'0" person. Boasting a 7 denier shell and our 850+ fill down, the Nanolite & Astralite achieve exceptionally high warmth to weight ratio and pack down to minuscule sizes. The temperature ratings are intended to be lower limit warmth potential when used with comparable head warmth such as an insulated cap, beanie, balaclava, etc.

- 7 denier ripstop nylon exterior shell fabric
- 10 denier nylon lining material
- 850+ fill power goose down
- insulated "yolk" style collar to prevent heat loss
- baffled construction
- adjustable shoulder girth range from 58" to 68"
- pad straps to keep insulated pad in place
- use with insulated pad and comparable head warmth for best results
- MADE IN USA

Model	size/length	temp rating (F/C)	shoulder girth	foot girth	fill weight (oz/g)	total weight (oz/g)	stuff size (in/cm)
Nanolite	5'8" / 175cm	38°F / 3°C	58" - 68" / 147-173cm	39" / 99cm	6.5oz / 184g	11oz / 312g	5" x 9" / 13x23cm
Nanolite	6'4" / 195cm	38°F / 3°C	58" - 68" / 147-173cm	39" / 99cm	7.25oz / 206g	12oz / 354g	5" x 9" / 13x23cm



AstraLite



Model	size/length	temp rating (F/C)	shoulder girth	foot girth	fill weight (oz/g)	total weight (oz/g)	stuff size (in/cm)
Astralite	5'8"/175cm	26°F / -3°C	58" - 68" / 147-173cm	39" / 99cm	10.5oz / 298g	16oz / 454g	6" x 10" / 15x25cm
Astralite	6'4"/195cm	26°F / -3°C	58" - 68" / 147-173cm	39" / 99cm	11.25oz / 319g	17.5oz / 496g	6" x 10" / 15x25cm

EverLite



When you need to extend the range of your sleeping bag system, play it safe and carry our 14 ounce EverLite.

This mummy-cut, box stitched, Sewn-Through is made for efficiency and versatility. There is no foot box and it features a very lightweight and compact (yet full length) YKK size #3 coil zipper. This design allows the bag to be

opened up completely to use like a tapered blanket for car camping or threaded over a hammock and zipped up to provide insulation all around your body. Both the top and bottom sections are open and feature and adjustable draw closure. This bag can also be used as an overbag with another two or three season mummy to create a system for camping in colder weather. Testing has shown that the EverLite can add about 10° F of additional warmth when used properly as an overbag. Available in two lengths, each with different girth dimensions.

- 45° F, 3" Loft
- Sewn-Through Box Construction
- Shoulder/Hip/Foot Girth 6'0"reg (60"/55"/39") 6'6"long (65"/60"/42")
- Down Fill weight 6'0" (6.5oz) 6'6" (8oz)
- Adjustable Neck Draw Closure & Foot Draw Closure w/ Insulated Draft Tube.
- Total Weight 6'0" (14.5oz.) 6'6" (17.25oz)
- Adds about 10° F as an overbag.





HighLite



Everything in the HighLite's design is intended to reduce weight and promote compressibility. First, the .9 ounce ExtremeLite™ shell fabric goes without saying. No other shell fabric is this light or packed with so many threads per inch. This specialized ExtremeLite™ bag uses a one way #4 1/2 YKK coil zipper that is cut to half length. While the horizontal seams are Sewn-Through, the vertical seams are baffled with 1 1/2" netting to allow unimpeded loft so the effect of its 850+ goose down is fully realized. Its efficient cut not only reduces bulk and weight, but reduces excess internal volume so quick heating is realized! At only 16 ounces total weight, no other bag is as light, as warm, as well made or as handsome as our HighLite.

- 35° F, 3 1/2" Loft
- 59" / 38" Shoulder/Foot Girth
- Sewn-Through & Baffled Box Construction
- 8 oz. Down Fill
- 16 oz. Total Weight



MityLite



Our MityLite is just the ticket for a lightweight summer get away or those spontaneous little trips to Europe when you expect to spend your nights at the local hostels. This sewn thru semi-rectangular bag can be zipped to our Summer Coupler to sleep two or opened up to act as a lightweight comforter. At 1 lbs. 10 oz. and with our .9 ounce ripstop shell this bag folds away into nothing for an easy carry. Stuff it into your carry-on luggage, or fold it into your wallet, you can carry it wherever you go.

- 40° F, 3" Loft
- Full-length #5 YKK Zipper
- 6" Spacing/Continuous Chambers
- 62" / 46" Shoulder/Foot Girth
- 12 oz. Down Fill
- Sewn-Through Construction
- 1 lbs. 10 oz. Total Weight



Tamarack



Our Tamarack could be used as a children's bag when the family heads for the hills, or it could be used as a 3/4 length bag along with a parka for an alpine bivy system. Any adults that are 5'0" or less should consider this as a lightweight comfortable bag for two-season outings. It is made with continuous baffles and a full-length wrap around YKK coil zipper with insulated draft protection. This bag is filled with the finest polish 850fp goose down and weighs just 19 ounces! Color will vary according to fabric availability.

- 30° F, 4" Loft
- Full-length #5 YKK Zipper
- 5" Spacing/Continuous Baffle Construction
- 60" / 57" / 42" Shoulder/Hip/Foot Girth
- 9 oz. Down Fill
- average Total Weight 19oz.
- available in 5'0" length only



Photo © Christoph Michel

EXTREMELITE™ SERIES

SummerLite



At just 1 lb 3 oz., the SummerLite is the lightest bag we make in a continuous baffle construction. Our goal in designing this bag was to make it as light as possible without eliminating key features or function. The result is a fully-baffled bag that weighs only 19 ounces and features a full-length zipper with insulated draft protection! The SummerLite is a dream come true for lightweight backpacking fanatics.

- 32° F, 4" Loft
- Full-length #5 YKK Zipper
- Insulated Draft Tube
- 5 1/4" Spacing/Continuous Baffles
- 9 oz. Down Fill
- 59" / 38" Shoulder/Foot Girth
- 1 lb. 3 oz. Total Weight



MegaLite



The MegaLite is cut to suit large folks so they too can enjoy the benefits of the ExtremeLite™ bags. No claustrophobia here with 64" of shoulder girth tapering to 39" at the foot. 12 ounces of goose down provides a temperature rating of 30°, and continuous baffles allow you to adjust the fill to suit your needs. At only 1 lb. 8 oz. this is your best friend during a summer bike trip.

- 30° F, 4" Loft
- Full-length #5 YKK Zipper
- Passive Top Collar
- 5 1/4" Spacing/Continuous Baffles
- 12 oz. Down Fill
- 64"/39" Shoulder/Foot Girth
- 1 lb. 8 oz. Total Weight



TerraLite



The latest addition to our Extremelite Series is a wide sleeping bag made for side sleeping comfort, the TerraLite. It features our 12 denier ripstop nylon shell fabric with a 15 denier nylon taffeta lining material. There are two zippers allowing this bag to mate with our mummy bags and the second zipper opens the bag up completely around the foot. With both zippers open this bag can make a fairly wide "camper van" comforter, but even when zipped up it is extremely comfortable. This is due to its wide girth through the middle of the bag, a design that side sleepers will find ideal. Despite the comfortable shape, this bag weighs less than two pounds.

- 25°F (-4°C), 5" Loft
- Dual Zipper design allows bag to open completely
- Continuous Baffle Construction
- 3 dimensional down filled draft tube
- Insulated Hood with adjustable draw closure
- average fill weight: 18 ounces (510 grams)
- average total weight: 29 ounces (825 grams)
- available in 3 lengths: short (5'6"), regular (6'0"), & long (6'6")
- Inside Measurements (shoulder/hip/foot): 65"/68"/42" (165cm/172cm/106cm)

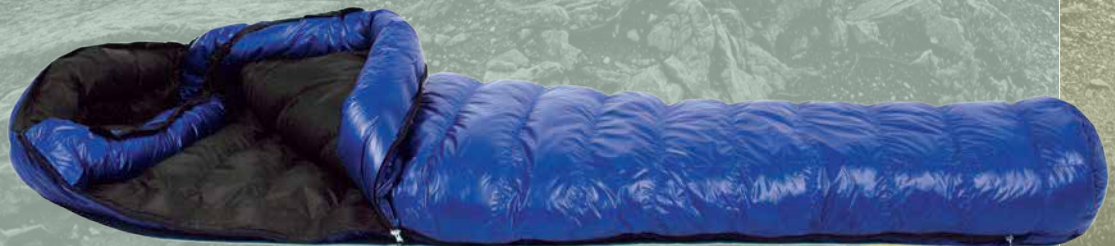


UltraLite



If your summer bike tour is going to take you through different climates then the UltraLite is a good choice. With a 59" shoulder girth this efficient bag is good to 20°. The full down collar helps to seal in heat around your neck without adding excess bulk, and 16 oz. of high lofting down pumps this bag to 5". The total weight of this very compressible package is only 1 lb. 13 oz.

- 20° F, 5" Loft
- Full-length #5 YKK Zipper
- Full Down Collar
- 5 1/4" Spacing/Continuous Baffles
- 59" / 38" Shoulder/Foot Girth
- 16 oz. Down Fill
- 1 lb. 13 oz. Total Weight



Alpinlite



This bag is wide, warm, and packed with features. With a 3-dimensional full down collar, a full-length YKK zipper, and 5" of loft, the Alpinlite has quickly become one of our most popular models. Our award winning Ultralite has been a favorite among lightweight backpackers for more than a decade. The Alpinlite is just a wide version of that great bag. There are many 20° down mummy bags on the market, but none have the width, warmth, or loft of this bag.

- 20° F, 5" Loft
- Full Down Collar
- 5 1/4" Spacing/Continuous Baffles
- 19 oz. Down Fill
- 64" / 39" Shoulder/Foot Girth
- Full-length #5 YKK Zipper
- 1 lb. 15 oz. Total Weight



Versalite



This Versalite is the warmest in our ExtremeLite™ series! A solid 3-seasons of bike touring or kayaking is at your fingertips with this bag. The Versalite sports 20 oz. of high lofting 850+ goose down for 6" of loft and a temperature rating of 10°. A Full Collar will seal in the warmth and protect you from the cold. 62" of shoulder girth is roomy enough and the total weight is only 2 lbs.

- 10° F, 6" Loft
- Full-length #5 YKK Zipper
- Full Down Collar
- 5 1/4" Spacing/Continuous Baffles
- 20 oz. Down Fill
- 62" / 39" Shoulder/Foot Girth
- 2 lbs. Total Weight

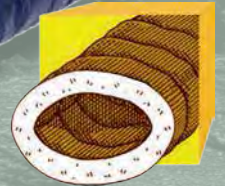


SemiLite



Alpine Climbers, lightweight backpackers, and anyone with a compact stature might find the SemiLite very useful. It was designed as a zipperless elephant's foot, which is a 3/4 length bag or hip length bag depending on your height, intended for use with a comparably warm parka for a lightweight alpine sleep system. It packs small and weighs less than a pound, but it is fully baffled and substantially insulated with 850+ fill power goose down. Simple and functional, warm and light, our SemiLite is perfect for alpinists, bikepackers or fast and light trail blazers. It could also be used as a bag on its own for lean to medium bodied outdoor enthusiasts that are less than 5 feet tall.

- Ripstop 12d nylon
- Elastic drawcord closure
- 850+ fill power goose down
- Fully insulated & enclosed foot
- Raised back insures overlap with parka
- Zipperless design reduces packed volume
- Integrated anchor loops for shoulder straps
- 25°F/-4°C rating when paired with comparable upper body warmth
- MADE IN USA



SlingLite



Our Slinglite is a lightweight underquilt with plenty of warmth that will compress down very small for backcountry travel, whitewater trips and other outdoor activities where portability is critical. Down underquilts are lighter, substantially warmer and more compact than other methods of insulating the body from cool air while sleeping in a hammock. Our Slinglite is made of lightweight materials that offer excellent breathability from the inside with an outer shell fabric that is highly water resistant. It can be used with most of the hammocks available on the market with gathered (i.e. without spanner bars) ends. The Slinglite is quite easy to secure to most hammocks and you may find that it will remain in a desirable position using only the shock corded ends secured to each end of the hammock. Additional loops and hooks leave many options for a wide range of rigging variables, tarp configurations, hammock systems or unique applications for this underquilt.

- Elastic drawcord closure on both ends
- Side clips & sewn loops provide many mounting options
- Corner mounted cordstops for lateral position adjustment
- 15 denier water resistant nylon for excellent water repellency
- Continuous baffle chambers (not sewn through) for more loft/warmth
- Compatible with most lightweight hammocks from ENO, Kammock, Grand Trunk, etc.
- 20°F/-7°C rating when paired w/ top insulation of equal warmth (i.e. top quilt/sleeping bag)
- Versatile uses include camp/cabin blanket or portable warmth at winter sporting events
- 850 fill power goose down
- MADE IN USA

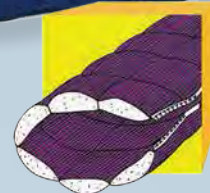


Caribou MF



Traditionally, all of the lightest weight bags are made with the extremely light ripstop nylons. We created our Caribou to be lightweight, durable, and comfortable by using MicroLite XP™. This 1 lb. 5 oz. mummy bag has a full length zipper and is cut wider than average for broader shoulders and a more comfortable fit. With its highly breathable Microfiber fabric, the Caribou is a durable lightweight summer bag and a great choice for AT hikers.

- 35° F, 3.5" Loft
- 10" Sewn-Through Box
- 63" / 39" Shoulder/Foot Girth
- 10 oz. Down Fill
- 1 lb. 5 oz. Total Weight

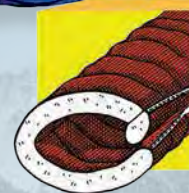


Alder MF



For those mild nights when counting shooting stars is all you have to do, then the semi-rectangular Alder MF is your bag of choice! Roomy enough for comfort and warm enough so you won't wake with a chill before dawn. This bag has a 62" shoulder girth and 46" at the foot. The Alder MF has a zipper along the side so that it can mate with mummy bags and a zipper around the foot so that it can be opened flat as a comforter or zipped to our Summer Coupler to be a sleep for two. This bag was formerly known as the "Aspen MF". Nothing about the bag has changed except the name.

- 25° F, 5" Loft
- 5 1/4" Spacing/Continuous Baffles
- 62" / 46" Shoulder /Foot Girth
- 16 oz. Down Fill
- Zips to Summer Coupler
- 1 lb. 15 oz. Total Weight

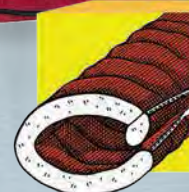


Sycamore MF



It's your third day on the Colorado and you've been running rapids for as many days. The Grand Canyon looks different from a raft! It's a special place with an ancient Puebloan ruin just up the draw...If you can climb out of your Sycamore MF early enough you might just see it before breakfast... With plenty of room and a hood just in case, the semirectangular Sycamore MF is made with our 1.2 ounce MicroLite XP™ to provide that extra margin in weather protection. Filled with 17 oz. of our high lofting down this bag with 5" of loft is rated to 25° F. It sports 62" of girth at the shoulder and 46" at the foot. Not only will it zip to our mummy bags, but the zipper around the foot section lets it open up flat to be used as a comforter... This is the river runners dream! This bag was formerly known as the "Hooded Aspen MF". Nothing about the bag has changed except its name.

- 25° F, 5" Loft
- 5 1/4" Spacing/Continuous Baffles
- 62" / 46" Shoulder /Foot Girth
- 17 oz. Down Fill
- 2 lbs. Total Weight



Apache MF



The Apache is built with attitude! It simply won't take no for an answer as it willingly pushes the bounds of a 2-3 season bag. These bags have a full 3-Dimensionally sewn down-filled collar to seal in heat when your trip turns a little bitter! The efficient cut lets you heat the bag quickly and gives you a lighter parcel to carry about. 19 oz. of high lofting down pumps up a durable 6" of loft. The MicroLite XP™ shell is very weather resistant while remaining extremely breathable. At a total weight of 2 lbs. you'll be amazed just how much cold these bags will tame.

- 15° F, 6" Loft
- 5 1/4" Spacing/Continuous Baffles
- 59" / 38" Shoulder/Foot Girth
- Full Down Collar
- 19 oz. Down Fill
- 2 lbs.z Total Weight



Badger MF



Don't let a little claustrophobia keep you from getting into a mummy bag. The Badger is wide at the shoulder and 41" at the foot. The girth is kept in line with a warm down filled collar that provides a formidable barrier preventing convective heat loss. Its draft tube is stoutly filled and protected from zipper jams by a Dacron™ stiffener. The hood is cut large and fills around your face without having to be cinched tight. You get the comfort of a large volume bag in weather resistant MicroLite XP™ fabric while 23 oz. of 850+ down keeps this bag lofted to 6".

- 15° F, 6" Loft
- 5 1/4" Spacing/Continuous Baffles
- 65" / 41" Shoulder/Foot Girth
- Full Down Collar
- 23 oz. Down Fill
- 2 lbs. 4 oz. Total Weight



Ponderosa MF



When room and lots of it is the issue, then get into something with 67" of shoulder girth and 48" wide inches at the foot. For sheer comfort our Ponderosa is the bag for big folks and claustrophobes alike. This large volume semi-rectangular bag has 7" of loft from 27 ounces of 850+ fill power down. And in spite of its size weighs in at only 2 lbs. 9 oz. Depending on your size you can enjoy this bag down to 15°. The Ponderosa will zip to our mummy bags, and if the nights are really mild, unzip the bag around the foot and mate it to our Summer Coupler. Now you can roll across a couple of time zones without leaving your bag! This bag is also available in 7' length.

- 15° F, 7" Loft
- 5 1/4" Spacing/Continuous Baffles
- 67" / 48" Shoulder/Foot Girth
- Zips to Summer Coupler
- 27 oz. Down Fill
- 2 lbs. 9 oz. Total Weight



Antelope MF



When the Sierras or the Rockies are your usual destinations and you need the maximum protection from your 3-season bag, leave nothing to chance with our Antelope. Its roomy 62" shoulder girth allows for comfort and the 7" loft from 26 ounces of high lofting down provides warmth to 5°. The security of this bag is sealed with a full 3-Dimensional down filled collar and a robust draft tube. While extremely weather resistant the MicroLite XP™ shell retains maximum breathability and its down filled collar is sewn with MicroLite XP™ fabric. These Antelopes take over in early spring and last through late fall. At a total weight of 2 lbs. 7 oz., they are the most substantial 3-season bag available. They are also available in 5'6" length.

- 5° F, 7" Loft
- 5 1/4" Spacing/Continuous Baffles
- 62" / 39" Shoulder/Foot Girth
- Full Down Collar
- 26 oz. Down Fill
- 2 lbs. 7 oz. Total Weight



Kodiak MF



Wasn't it the Big and Tall Gazette, that called our Kodiak the XL (or excel?) of sleeping bags? This 0° mummy bag has a full 66" of shoulder girth and 41" of foot girth to fit any bear sized person. 30 oz. of down fill this bag with 7" of loft and the continuous baffles keep the bag versatile as the weather changes. Both the draft tube and full down collar are 3-dimensionally sewn and amply filled with down. The MicroLite XP™ shell makes this bag stand firm against any weather. All this with a total weight of only 2 lbs. 12 oz. No matter what your size, we have a bag to fit! The Kodiak is also available in 7' lengths!

- 0° F, 7" Loft
- 5 1/4" Spacing/Continuous Baffles
- 66" / 41" Shoulder/Foot Girth
- Full Down Collar
- 30 oz. Down Fill
- 2 lbs. 12 oz. Total Weight



Sequoia MF



For serious weather protection our roomy Sequoia is available in a tightly woven 1.2 oz. MicroLite XP™ shell. The MicroLite XP™ fabric offers maximum breathability while allowing a high degree of water resistance. These Sequoias have a full down collar solidly stuffed with down to provide a protective seal from the bellows effect as you move about inside your bag. The continuous baffles allow you to adjust the down fill to suit the changes in weather. Its two zippers not only allow you to zip to mummy bags but also to unzip the foot so that it can lie out flat. Our Sequoias are a perfect choice if you don't like sacrificing elbow room during the most weather prone climates.



- 5° F, 7" Loft
- 5 1/4" Spacing/Continuous Baffles
- 66" / 48" Shoulder/Foot Girth
- Full Down Collar
- 33 oz. Down Fill
- 3 lbs. 4 oz. Total Weight



Bristlecone MF



No cold can turn you away when you're hunkered down in your Bristlecone. This bag is built big and warm! 69" of girth at the shoulder and 48" of girth at the foot. Crammed with 42 oz. of 850+ down yields an unrelenting 8 1/2" of simmering loft that keeps you heated to -10°. A large draft tube and the down filled collar make certain that winter remains outside. With 2 zippers it can be zipped to our mummy bags or unzipped to lie flat. In spite of its roomy proportions the Bristlecone weighs only 3 lbs. 15 oz.

- -10° F, 8.5" Loft
- 6" Spacing/Sideblock Baffle
- 69" / 48" Shoulder/Foot Girth
- Full Down Collar
- 42 oz. Down Fill
- 3 lbs. 15 oz. Total Weight



Lynx MF



The sun is bright, the air is warm. Spring skiing is the best of both seasons, and that corn snow is great for carving tele's. But when the sun goes down it often takes the spring with it. That's why you're using our Lynx in MicroLite XP™. This -10°F bag weighs only 3 lbs. 2 oz. and has a shoulder girth of 62". It comes equipped with our plump down-filled collar. The V-Block Side Baffle insures perfect down distribution. And the well filled draft tube has a stiffening tape that prevents snags. This efficient bag with over 8" of loft is simply a bombshell of insulation and quite possibly the warmest three pound bag on the market.

- -10° F, 8.5" Loft
- 6" Spacing/V-Block Side Baffle
- 62" / 39" Shoulder/Foot Girth
- Full Down Collar
- 32 oz. Down Fill
- 3 lbs. 2 oz. Total Weight



Puma MF



Known by Volcanologists the world over you'd think this Puma MF was filled with high lofting lava! 9.5" of loft, 36 oz. of 850+ fill power down, two densely packed Interlocking Draft Tubes and a full down filled collar will keep you in the ring of fire till 25 below zero. Its VBlock Side Baffle provides phenomenal down control, so necessary in a bag with this much loft. You get a 64" shoulder girth so that there's even room for layering. The MicroLite XP™ shell has superior breathability while being extremely water resistant. This bundle of warmth weighs in at just 3 lb. 7 oz. total weight.

- -25° F, 9.5" Loft
- 6" Spacing/V-Block Side Baffle
- 64" / 39" Shoulder/Foot Girth
- Full Down Collar
- Interlocking Draft Tubes
- 36 oz. Down Fill
- 3 lbs. 7 oz. Total Weight



Apache GWS



The Apaches are built with attitude! They won't take no for an answer as they willingly push the bounds of a 2-season bag. These bags have a full 3-Dimensionally sewn down filled collar to seal in heat when the weather takes a turn for the worse! The efficient cut lets you heat the bag quickly and gives you a lighter parcel to carry about. 19 oz. of high lofting down pumps up a durable 6" of loft. The Gore Windstopper™ shell is very weather resistant while remaining extremely breathable. The Apache in Gore Windstopper™ fabric is a very efficient package that is built like a pint sized winter bag. It's full down collar and draft tube are capped with Gore Windstopper™ fabric. Gore Windstopper™ shell fabric provides maximum protection against external moisture. At a total weight of 2 lbs. 6 oz. you'll be amazed just how much cold these bags will tame.

- 15° F, 6" Loft
- 5 1/4" Spacing/Continuous Baffles
- 59" / 38" Shoulder/Foot Girth
- Full Down Collar
- 19 oz. Down Fill
- 2 lbs. 6 oz. Total Weight



Badger GWS



Don't let a little claustrophobia keep you from getting into a mummy bag. The Badger is a vast 65" wide at the shoulder and 41" at the foot. The girth is kept in line with a warm down filled collar that provides a formidable barrier preventing convective heat loss. Its draft tube is stoutly filled and protected from zipper jams by a Dacron™ stiffener. The hood is cut large and fills around your face without having to be cinched tight. You get the comfort of a large volume bag with a water resistant Gore Windstopper™ shell while 23 oz. of 850+ down keeps this bag lofted to 6".

- 15° F, 6" Loft
- 5 1/4" Spacing/Continuous Baffles
- 65" / 41" Shoulder/Foot Girth
- Full Down Collar
- 23 oz. Down Fill
- 2 lbs. 12 oz. Total Weight



Antelope GWS



When the Sierras or the Rockies are your usual destinations and you need the maximum protection from your 3-season bag, leave nothing to chance with our Antelope. Its roomy 62" shoulder girth allows for comfort and the 7" loft from 26 ounces of high lofting down provides warmth to 5°. The security of this bag comes from a seal created by its 3-Dimensional down filled collar, robust draft tube, and well designed hood. Our Gore Windstopper™ fabric is the lightest weight and most compressible of any other Windstopper™ fabric. It is the most water resistant of any laminated fabric designed specifically for sleeping bags. This bag has the collar and draft tube completely made with Gore Windstopper™ fabric to create an impenetrable seal. These Antelopes take over in early spring and last through late fall. At a total weight of 2 lbs. 13 oz., they are the most substantial 3-season bag available. They are also available in 5'6" length.

- 5° F, 7" Loft
- 5 1/4" Spacing/Continuous Baffles
- 62" / 39" Shoulder/Foot Girth
- Full Down Collar
- 26 oz. Down Fill
- 2 lbs. 13 oz. Total Weight



Sequoia GWS



For maximum weather protection our roomy Sequoia is available in a Gore Windstopper™ shell for extreme weather protection. The Gore Windstopper™ shell is the most water resistant-breathable fabric suitable for sleeping bags. In the Gore Windstopper™ bags you'll find the down filled collar and draft tube are constructed with Gore Windstopper™ fabric for all of its parts. These Sequoias have a full down collar solidly stuffed with down to provide a protective seal from the bellows effect as you move about inside your bag. The continuous baffles allow you to adjust the down fill to suit the changes in weather. Its two zippers not only allow you to zip to mummy bags but also to unzip the foot so that it can lie out flat. Our Sequoias are your best friend when you need room during the most weather prone climates.

- 5° F, 7" Loft
- 5 1/4" Spacing/Continuous Baffles
- 66" / 48" Shoulder/Foot Girth
- Full Down Collar
- 33 oz. Down Fill
- 3 lbs. 10 oz. Total Weigh



Kodiak GWS



Wasn't it the Big and Tall Gazette, that called our Kodiak the XL (or excel?) of sleeping bags? This 0° mummy bag has a full 66" of shoulder girth and 41" of foot girth to fit any bear sized person. 30 oz. of down fill this bag with 7" of loft and the continuous baffles keep the bag versatile as the weather changes. The draft tube and full down collar are all capped with Gore Windstopper™ fabric, and amply filled with down. The Gore Windstopper™ shell makes this bag stand firm against any weather. All this with a total weight of only 3 lbs. 2 oz. No matter what your size, we have a bag to fit! The Kodiak is also available in 7' lengths!

- 0° F, 7" Loft
- 5 1/4" Spacing/Continuous Baffles
- 66" / 41" Shoulder/Foot Girth
- Full Down Collar
- 30 oz. Down Fill
- 3 lbs. 2 oz. Total Weight



Lynx GWS



When getting to a backcountry bowl with enough energy to enjoy the fresh powder, being fast and going light is crucial. That's why the Lynx in Gore Windstopper™ is your choice. This powerhouse of a bag is packed with 33 oz. of 850+ down, and weighs in at 3 lbs. 8 oz. This efficient cut, -10° bag has a full 3-Dimensional down filled collar completely made with Gore Windstopper™ fabric. The draft tube is also Gore Windstopper™ fabric and has a stiffening tape. Its V-Block Side Baffle insures perfect down control so that down stays where it's needed most. Caution! This much warmth in so small a package may reach critical mass!

- -10° F, 8.5" Loft
- 6" Spacing/V-Block Side Baffle
- 62" / 39" Shoulder/Foot Girth
- Full Down Collar
- 32 oz. Down Fill
- 3 lbs. 8 oz. Total Weight



Puma GWS



To some people winter mountaineering is just a pastime. Be it searching for an uncut bowl to tele, a frozen waterfall to climb or a simple visit to the Brooks Range, the Puma Gore Windstopper™ has been there, done that! This sizable bag is lofted with down and roomy to boot! 37 ounces of 850+ fill power down lofts this bag to a full 9.5" for a rating of minus 25 below! A shoulder girth of 64" provides room to layer, store clothing or fit to big folk. The inside foot section is sewn with a 2.4 oz. fabric to protect the bag while stowing gear. And the Reverse Differential Hood is roomy, down filled and warm, and totally made with Gore Windstopper™. The full down filled collar and both Interlocking Draft Tubes are also completely made with Gore Windstopper™ fabric. No place to cut costs! Few continents require anything warmer than our Puma Gore Windstopper™!



- -25° F (-32°C), 9.5" (24cm) Loft
- V-Block Side Baffle Construction
- 64" / 39" (163cm/99cm) Shoulder/Foot Girth
- Full Down Collar
- Abrasion Resistant Foot Box Lining Fabric
- Interlocking Down Filled Draft Tubes with Gore Windstopper™ fabric
- 37 oz. (1050g) Down Fill
- 3 lbs. 12 oz. (1700g) Total Weight

Cypress GWS



Until now most of the sleeping bags designed for severe cold weather have been mummy bags. The Cypress GWS is incredibly wide, with more insulation and girth than any other bag in its warmth range. Even though this is not a mummy bag, it is absolutely capable of keeping a person warm at -30F (-34C). With an average loft of 11" this bag will completely engulf your body with a thick barrier of the best thermal protection available, our 850+ fill power premium quality goose down. In fact, a Cypress GWS is a good way to surround yourself in warm goose down since each one is filled with about 50 ounces of it. Features include a stout insulated draft tube inside the zipper combined with a second storm flap covering the outside of the zipper, a Gore Windstopper outer shell material, a three dimensional insulated draft collar, and a second zipper allowing the bag to open up completely around the foot.



- -30°F (-34°C), 11" (28cm) Loft
- 850+ fill power goose down
- Adjustable down-filled collar
- Well insulated draft tube behind zipper
- Storm Flap provides external zipper protection
- Sideblock Baffle Construction
- 50 ounces (1400g) of down filling
- Average Total weight 4lbs 14oz (2200g)
- Dual Zippers allow bag to open completely around foot
- Very wide dimensions (shoulder girth / hip girth / foot girth)
(69"/175cm, 61"/155cm, 48"/122cm)
- Available in two lengths: regular (6'0"), or long (6'6")

Bison GWS



Denali, Aconcagua, Himalaya...mountaineering in its extreme sense. These are places where mistakes cannot be made and so the Bison is most often chosen to serve. Gore Windstopper™ fabric makes this bag impervious to the elements while remaining lightweight and very compressible. Crammed with 42 ounces of 850+ fill power down this bag has 11 abundant inches of heat trapping loft. Huge V-Block Side Baffles and horizontal baffles across your chest keep the down fill in place. Double Interlocking Draft Tubes and a down filled Gore Windstopper™ collar seal in heat and security while howling winds surround your tent. The massive hood is not only well filled but is completely made with Gore Windstopper™ fabric and has a large integral hood ruff to seal your face from the elements. The Bison is the crowning glory of Western Mountaineering and demonstrates our commitment to innovation and quality. This life saving bundle weighs in at a scant 4 lb. 10 oz.



- -40° F, 11" Loft
- 5 1/4" Spacing/V-Block Side Baffle
- 64" / 39" Shoulder/Foot Girth
- Full Down Collar
- Insulated External Hood Ruff
- Interlocking Down Filled Draft Tubes with Gore Windstopper™ fabric
- 42 oz. Down Fill
- 4 lbs. 10 oz. Total Weight
- Abrasion Resistant Foot Box Lining Fabric

Cloudrest Pillows



For the best night's sleep possible, bring along our Cloudrest down pillow. With 4 ounces (112 grams) of our 800 fill power goose down and only 5 ounces (140 grams) total weight, "you'll never want to leave home without it" again. With its own built in stuff sac, the Cloudrest easily fits into the corner of your backpack or suitcase.

- 4 ounces (112 grams) 800 fill power goose down
- 5 ounces (140 grams) total weight
- built in stuff sac



Photo © Christoph Michel

Cloud 9 Comforter



Answering to the call of our customers, we proudly introduce the "Cloud 9" Comforter. These down quilts have an incredibly soft, lightweight shell fabric and they are made in USA with the same attention to detail that we put into all of our products. Filled with high lofting 800 fill power Eastern European goose down, they make you feel like you're on "Cloud 9". See your nearest WM dealer for more details.

- Soft, lightweight fabric
- Corner ties for securing to a cover
- Made in USA
- 800 fill power goose down
- Quilted box stitch construction
- Available in three sizes:

Twin (55"W x 87"L) 1 lb 9 oz (w/12 oz fill)

Queen (87"W x 92"L) 2 lb 11 oz (w/21 oz fill)

King (102"W x 92"L) 3 lb 1 oz (w/25 oz fill)



Sleep Liners

Our Sonora and Tioga sleep liners are a great lightweight option for anyone looking for a compact and lightweight sleeping bag liner or sleep sack for travel. Both the Polyester (Sonora series) and the Silk (Tioga series) fabrics are soft, breathable, yet woven with ample density to help protect you from the questionable bedding in a sketchy motel room. Both materials feel very nice against the skin and won't latch onto other fabrics when used inside a sleeping bag or under some blankets in the loft of a winter cabin. These liners pack small enough to take along anywhere you travel, and using it in a sleeping bag will help to keep your bags lining material cleaner on extended backcountry outings. The mummy and taper liners are designed for maximum efficiency while the rectangular liners provide a bit of additional room for those who need it. Made in India.



Sonora Liner (Poly)	max height	shdr/hip/foot	weight	stuffed size
Taper Regular	72 in 183 cm	60/48/38 in 153/123/97 cm	5 oz 142 g	3x5 in 7x12 cm
Taper Long	78 in 198 cm	64/52/42 in 163/132/107 cm	5 5/8 oz 160 g	3x5.5 in 7x13 cm
Mummy Regular	72 in 183 cm	60/48/40 in 153/123/92 cm	5 3/8 oz 154 g	3x5 in 7x12 cm
Mummy Long	78 in 198 cm	64/52/44 in 163/132/112 cm	6 1/8 oz 174 g	3x5.5 in 7x13 cm
Rectangular	78 in 198 cm	32 x 64 in 81 x 163 cm	6 7/8 oz 182 g	3x5 in 7x12 cm

Tioga Liner (Silk)	max height	shdr/hip/foot	weight	stuffed size
Taper Regular	72 in 183 cm	60/48/38 in 153/123/97 cm	3 3/8 oz 95 g	2.25x4 in 6x10 cm
Taper Long	78 in 198 cm	64/52/42 in 163/132/107 cm	3 7/8 oz 110 g	2.25x4.5 in 6x11 cm
Mummy Regular	72 in 183 cm	60/48/40 in 153/123/92 cm	3 5/8 oz 103 g	2.25x4.5 in 6x11 cm
Mummy Long	78 in 198 cm	64/52/44 in 163/132/112 cm	4 1/8 oz 117 g	2.25x5 in 6x12 cm
Rectangular	78 in 198 cm	32 x 64 in 81 x 163 cm	4 3/8 oz 124 g	2.25x5 in 6x12 cm

HotSac VBL



This fire engine red vapor barrier liner is your most important companion for those technical winter trips. A VBL works by stopping heat loss from evaporative cooling. A VBL will also prevent your body vapor from degrading your insulation. This is most important during extended stays inside your bag. Our Hot Sac™ VBL goes one step further by stopping radiant heat loss with its reflective metallic backing. An elastic draw cord at the top of the Hot Sac™ cinches about your neck to prevent convective heat loss. The new Hot Sac™ weighs only 4.5 ounces and is light enough to carry on day trips as an emergency bivy.

- Fits Up to 6'6"
- 0.6 oz. Ripstop Nylon Face Fabric
- 4.5 oz. Total Weight



Colors subject to change, please visit our website or contact your local dealer for color details of available inventory.

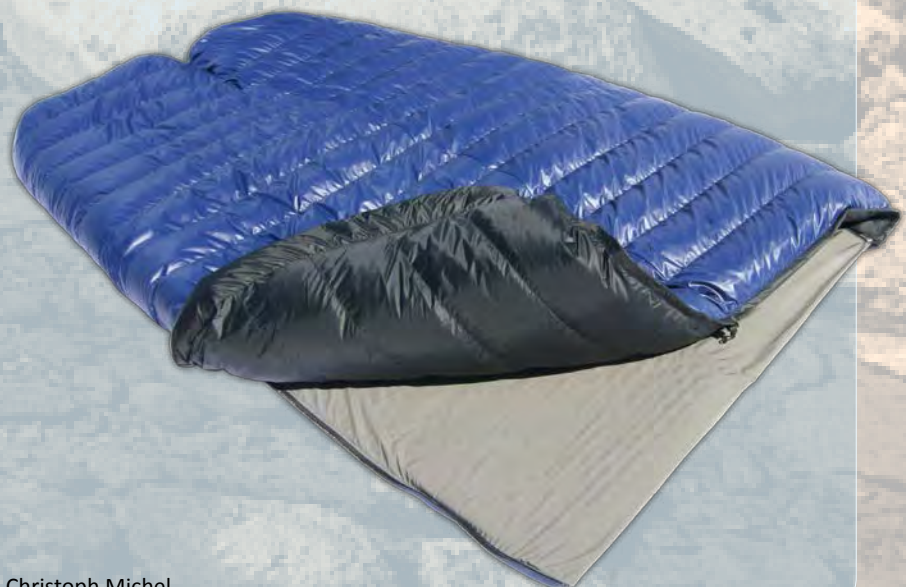
Summer Coupler



Turn our semi-rectangular bags into a comfortable Two-Sleep by zipping up to our Summer Coupler! This cotton tri-blend fabric has the same feel as the sheets on your bed. Sleeves on the underside hold your insulated pads in place. By nature of its design the Summer Coupler works only with our semi-rectangular bags which do not feature hoods. This is not a waterproof sheet, so a ground cloth is still needed. The Summer Coupler weighs just 1lb. 4oz.



Photo © Christoph Michel



QuickFlash jacket



Our Quickflash jacket is designed to provide just enough warmth for your next backcountry excursion. It is highly compressible for ease of storage in the top pouch of your backpack, day pack, or carry-on luggage. Features include a superlightweight 12denier ripstop shell fabric, an insulated collar, pockets with insulation on both sides, and a down filled placket behind the zipper backed with stiffening tape to prevent snags. Offered in Mens and Womens sizes with several color options. Average total weight is only 8 ounces (225 grams). Average fill weight is 2.5 ounces (70 grams).



Colors - Women: black, ice blue, or navy blue

Colors - Men: clay, navy blue, or black

- Extremely lightweight & highly compressible
- 12 D shell material is very light & woven tight
- YKK reversed coil zipper with insulated draft panel
- Fully Insulated pockets (goose down on both sides)
- 850+ fill power goose down insulation
- Designed for optimal warmth to weight ratio

Flash Vest



This lightweight vest is a dream come true for lightweight enthusiasts. At only 5 ounces (140 grams) it is one of the lightest insulated garment you will find. With a full length zipper, 850+ fp goose down, and reflective trim, this vest is likely to become your favorite new layer.



Colors - Women: plum, black, or silver

Colors - Men: black, brown or silver

- 850 Plus Fill Power Goose Down
- Reflective Trim / Edging
- YKK reversed coil Zipper
- Lightweight Shell Fabric
- Comfortable as a Layer
- Available In Mens SM-XL and Womens XS-LG
- Average Total Weight 5 oz.
- Made in USA

Hooded Flash Jacket

Our quest to find the perfect balance of warmth, weight, and performance has resulted in a very light functional garment, the Hooded Flash jacket. We designed this jacket to provide sufficient warmth for the less extreme climate ranges with the least amount of weight. The shell fabric is a tightly woven material that weighs only 0.9 oz. per square yard! There are no cordlocks on this garment because we have finished the hood and waist with lightweight elastic piping to seal out the cold. The pockets are insulated with down on both sides, and the full zipper has insulated draft protection. This jacket is both comfortable and functional. It is extremely lightweight and has just enough warmth, yet its not too bulky.



Colors - Women: Electric Blue, Plum, Silver and Black

Colors - Men: Chocolate Brown, Slate Blue, Silver, and Black

- 850 Plus Fill Power Goose Down
- Insulated hood
- Down Filled Front Pockets
- YKK Lightweight Reversed Coil Zipper
- Lightweight 0.9 oz. Dot-Ripstop Nylon Shell Fabric
- Down Filled Draft Tube Behind Zipper
- Available In Mens SM-XL and Womens XS-LG
- Average Total Weight 10.25 oz.
- Average Fill Weight 3 oz.
- Made in North America



Flash XR Series Jacket

Looking for a lightweight down jacket with a little more water resistance? Our Flash XR series jackets may be the perfect solution. We have added zippered closures to the pockets, a hood adjustment strap, and used an exclusive new lightweight laminated shell fabric which provides an added measure of protection against moisture. The average weight of these jackets is only 11 ounces, yet it has a breathable water resistant shell fabric for better performance and a bit more durability. Zippered pockets have insulation on both sides and protective covers to keep water out when the pockets are closed. A small strap conveniently located behind the hood allows for easy fit adjustment and brings it closer to your head so that it won't block your line of sight each time you peer left or right.

- 850 Plus Fill Power Goose Down
- Insulated hood with external fit adjustment strap
- Fully insulated pockets with zipper closures
- YKK Lightweight Reversed Coil Zippers
- Water resistant breathable Proloft XR TM Laminated Shell Fabric
- Down filled draft tube behind main zipper
- Average Total Weight 11 oz.
- Average Fill Weight 3.5 oz
- Available In Mens SM-XL and Womens XS-LG
- Made in North America



Colors - Women: Navy, Black or Raspberry Colors - Men: Navy, Black or Sage

Flight Series Jacket & Vest



We have carefully selected the lightest fabrics and raw materials to make our new Flight series jackets and vests. The shell fabric is a tightly woven material that weighs only 0.9 oz. per square yard! If you are looking for a lightweight, compact, and highly insulative layer, then look no further. This is the lightest down garment you will find that

still has plenty of insulation in it-and it is made in Canada.

- 850 Plus Fill Power Goose Down
- Elastic Drawcord Bottom Closure
- Down Filled Front Pockets
- Super Light Vislon Zipper
- Lightweight 0.9 oz. Micro-Dot Ripstop Shell Fabric
- Down Filled Draft Tube Behind Zipper
- Available In Unisex Sizing From XS-XL
- Average Fill Weight (Jacket) 4.5 oz (130g)
- Average Total Weight (Jacket) 11 oz (310g)
- Average Fill Weight (Vest) 2.5 oz (70g)
- Average Total Weight (Vest) 6 1/2 oz (185g)
- Made In USA



Jacket available in Grey or Black

Vest available in Black

Vapor Jacket

The Vapor was designed to offer the perfect combination of comfort, performance, and weight in an all-around jacket. It is lightweight, comfortable, weather resistant, and warm. With its Windstopper shell fabric and self sealing cuffs, this jacket looks as good as it feels. All this in a jacket that weighs a mere 16 ounces!

- Internal Powder Gasket Cuffs
- Two-way YKK Vislon Zipper w/ Draft Tube
- Average Fill Weight 5 oz (140g)
- Average Total Weight 16 oz (450g)!
- Gore Windstopper™ Shell Fabric
- 850 Plus Fill Power Goose Down
- Adjustable Elastic Waist Closure
- Insulated Zipper Pockets
- Available In Unisex Sizes XS-XL
- Made in North America



Meltdown Series Jacket



Made with the finest 850 plus fill power goose down and a water resistant microfiber outer shell fabric, these garments are a superior package of warmth and protection from the elements. These jackets are known for their incredible warmth to weight ratio. Our Meltdown Series Jackets are very warm, lightweight, and made to last

- 850 Plus Fill Power Goose Down
- Elastic Drawcord Bottom Closure
- Down Filled Front Pockets
- Zippered Pockets
- Two Way YKK Zipper w/Draft Tube
- Microfiber Outer Shell Fabric
- Available In Unisex Sizes XS-XL
- Available In Grey (pictured) or Black
- Average Fill Weight 6.5 oz (185g)
- Average Total Weight 17 oz (480g).
- StowAway Hood that zips into collar



Ion Parka



Here is the parka that will keep you smiling in the face of cold weather. A unique 3-layer design provides the warmth of most baffled parkas, but with less weight and fewer exposed seams on the outer shell. It is cut longer throughout the body and capped with an outer shell made from Gore Windstopper™ for an ideal balance of water resistance, warmth retention, and breathability. At just 25 oz (710g), our Ion is one of the lightest big mountain parkas you will find.

- Gore Windstopper™ outer shell fabric
- Adjustable 3-layer insulated hood
- Adjustable waist and bottom closure
- 850+ fill power goose down insulation
- 3-layer design for maximum warmth
- Two Way YKK vislon zipper with full draft protection
- Insulated cargo pockets with zippers
- Internal pocket with zipper closure
- Average fill weight 8 oz (225g)
- Average total weight 25 oz (710g)
- Available in Unisex sizes XS-XL
- colors: black



Snøjack Parka GWS



We normally expect to sacrifice some upper body agility when the expedition parka goes on to face temperatures that are 20 or 30 degrees colder than the ice cubes in your freezer. Our SnøJack Parka GWS was designed to provide ample upper body insulation for cold weather expeditions while allowing you to move around as if you were wearing a much lighter down sweater. This improved agility is the result of combining two construction methods to optimize performance and function. While 95% of the parka is made with baffled chamber construction, there are two narrow panels under the arms which are quilted to reduce bulk and improve mobility. We kept the weight to a minimum by using the most advanced lightweight materials available.

- Made in USA
- YKK #5 Vislon zippers
- Gore Windstopper™ outer shell fabric
- Baffled construction w/quilted pit panels
- Storm cuff w/wrist gasket & velcro tab
- YKK Two-way main zipper w/ locking sliders
- Double draft tubes protecting main zipper
- Zippered, insulated front pockets
- Two big stretch mesh internal pockets
- Fully adjustable baffled hood
- Insulated hood ruff
- 850 fill power goose down
- Drawcord waist closure
- Drop seat pattern & long cut
- Unisex Sizes XS-XL
- Avg Total Weight (Medium): 28.5oz (805g)
- Avg Fill Weight (Medium): 12.5oz (350g)
- Color: Green



Flight Pants



Our Flight pants offer more warmth and added weather protection to keep you in comfort mode when the mercury drops and the weather conditions become more challenging. Winter protection for your lower body doesn't have to take up more space in your pack than a water bottle. The Flight pants are stuffed plump with 850 fill power goose down and weigh just 12.5oz (360 grams) per pair, yet they can pack down quite small because the insulation is so compressible. For added protection against moisture and abrasion, these pants feature Gore Windstopper laminated outer shell fabric on the seat and knees. Microfiber outer shell fabric is utilized for the rest of the garment for increased breathability and reduced weight. Features include an adjustable waist belt, adjustable ankle closure with draft protection and dual full length, two-way separating YKK coil side zippers with locking sliders.

SIZING: Unisex XS - XL.

COLOR: Black

- Microfiber shell fabric with DWR finish
- Gore Windstopper fabric protecting seat & knees
- 850+ Fill power goose down
- Full length side zips, YKK two way reverse #5 coil zippers
- Adjustable waist belt
- Elastic ankle cuffs with adjustable Velcro closure
- Gore Windstopper storm tabs protecting zipper sliders
- Average total weight 360 grams (12.5oz) per pair
- Average fill weight 115 grams (4oz) per pair



Flash Pants



These lightweight down pants provide ample warmth for many situations and could be layered with a shell for more extreme conditions. Our Flash pants were designed to provide more lower body warmth than a thick pair of fleece bottoms with less weight and substantially less packed volume than any synthetic alternative. The average weight for a pair of these pants is roughly 180 grams and will compress down to about half the size of your waterbottle. What a great way to lighten your pack and raise the comfort level on your next trip! These pants are made with 850 fill power goose down and an extremely lightweight nylon ripstop shell material. Features include an adjustable waist belt, re-inforced seat material, and elastic ankle closures to seal in the warmth.

SIZING: Unisex XS - XL.

COLOR: Black

- Lightweight ripstop nylon with water repellent finish
- 850+ Fill power goose down
- Re-inforced fabric in the seat area
- Adjustable waist belt
- Elastic ankle cuff closures
- Average total weight 180 grams (6.5 oz) per pair
- Average fill weight 57grams (2 oz) per pair



Background photos by Lloyd Chambers © 2010 diglloyd Inc



DOWN BOOTIES

Flash Down Booties



The objects in this photo are lighter than they may appear. Our Flash Down Booties weigh an average of 3oz (85g) per pair in the Medium size. 1/4" foam insole provides just enough warmth and support beneath your feet while the 12Denier ripstop nylon shell allows the down to reach its maximum loft potential. A simple elastic draw closure above the ankle keeps the cold air outside while your feet stay cozy and warm. At just 1 1/2 oz (42g) per foot these booties must be packed away or on your feet because they are light enough to blow away on a windy day if you leave them out.

- Unisex Sizes XS – XL
- Extremely light (average total weight 3oz/85g per pair)
- Elastic draw cord closure
- High Lofting Goose down insulation
- Superior quality 1/4" EV50 foam insole
- 70denier coated nylon rand and outsole
- 12denier ripstop nylon outer shell material
- Available in two colors: Black or Cranberry



Standard Booties



These booties are made in USA with high fill power European goose down inside a tightly woven nylon outer shell fabric. The nylon shell is treated with a DWR to protect the insulation from external moisture and the rand is made of a durable coated nylon fabric. An elastic heel band positioned inside the booties helps lock in the heat and provide lateral stability for walking. The bottom of the booties feature a non-slip Toughtek material to keep you from slipping.

- Made in USA
- Average total weight only 6 ounces per pair
- 800 fill power European goose down insulation
- Durable downproof nylon outer shell fabric with durable water repellent finish
- Non-slip Toughtek outer sole material
- Durable foam insole with superior thermal insulation
- Internal elastic heel strap for maximum warmth and stability
- Waterproof and durable rand material
- Adjustable elastic draw closure
- Color options: Sky Blue, Navy Blue, or Yellow



Expedition Booties



Our Expedition booties add an extra measure of protection against the elements for more severe winter conditions. The Gore Windstopper fabric extends well above the insulation providing full-gaiter protection against the elements. Other features like the additional foam insulation in the heel make this bootie a perfect choice for winter camping or expeditions.

- Average total weight less than 8 ounces per pair
- 800 fill power European goose down insulation
- Gore Windstopper shell fabric for superior moisture protection
- Extended design provides full calf coverage
- Non-slip Toughtek outer sole material
- Durable foam insole with superior thermal insulation
- Insulated heel foam insert
- Internal elastic heel strap for maximum warmth and stability
- Waterproof and durable rand material
- Adjustable elastic draw closure
- Color options: Red or Black color

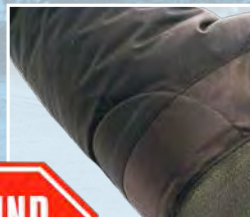




Photo by Christoph Michel

CARE AND MAINTENANCE

Your bag should always be placed on a waterproof ground cloth to keep dirt and other forest litter from soiling the shell. You can protect the inside of the bag from sweat and body oils by wearing a pair of clean thermals to bed or using a liner.

STORING YOUR BAG

When you store your bag put it into a large breathable storage sack. Do not leave it stuffed in its stuff sack or in a plastic bag for long periods of time. Air dry your bag in the sun or in a tumble dryer before storing it.

For more details on caring for your Western Mountaineering products including laundering instructions, please visit our website:

www.westernmountaineering.com/FAQ

GUARANTEE AND WARRANTY

All Western Mountaineering products are guaranteed against manufacturer defects for an unlimited time. Should a product fail due to a defect in materials or craftsmanship, we will, at our option, repair or replace the item at no cost to the owner. We will make the determination of what will be covered under warranty at the time that we inspect the product. This guarantee does not cover normal wear and tear, misuse, or improper laundering. This guarantee does not cover accidental punctures, tears, rips, burn holes or deterioration of the materials caused by mold or chemicals. We are able to repair most non-warranty issues at a reasonable cost. If you would like more information, please visit westernmountaineering.com/FAQ

TheLon Wilderness-Aurora Borealis

SPECIFICATIONS-USA

	Model	Shape	Size	Rating	Loft	shdr/hip/foot	Fill Wt.	Total Wt.	Stuff size (in)	Sack Size	* Min Vol.
ExtrememLite™ Series	EverLite	Tapered (box stitched)	6'0"	45° F	3"	60"/55"/39"	6.5oz	14.5 oz	5 x 10	XXXXS	2.5 L
			6'6"	45° F	3"	65"/60"/42"	8 oz	17.5 oz	5 x 10	XXXXS	3.6 L
	MiltyLite	Semi Rec	6'3"	40° F	3"	62"/59"/46"	12 oz	1 lb 10 oz	6 x 12	XXS	6.7 L
	NanoLite	Top Quilt (baffled)	5'8"	38° F	3.5"	up to 68"/38"	6.5 oz	11 oz	5 x 10	XXXXS	1.9 L
			6'4"	38° F	3.5"	up to 68"/38"	7.25 oz	12.5 oz	5 x 10	XXXXS	1.5 L
	HighLite	Mummy (box stitched)	5'6"	35° F	3.5"	59"/51"/38"	7 oz	15 oz	6 x 10	XXXXS	2.7 L
			6'0"	35° F	3.5"	59"/51"/38"	8 oz	16 oz	6 x 12	XXS	3.1 L
			6'6"	35° F	3.5"	60"/52"/38"	9 oz	17 oz	6 x 12	XXS	3.4 L
	SummerLite	Mummy	5'6"	32° F	4"	59"/51"/38"	8 oz	1 lb 2oz	6 x 12	XXS	3.8 L
			6'0"	32° F	4"	59"/51"/38"	9 oz	1 lb 3 oz	6 x 12	XXS	4.2 L
			6'6"	32° F	4"	60"/52"/38"	10 oz	1 lb 5 oz	6 x 12	XXS	4.9 L
	MegaLite	Mummy (w/top collar)	5'6"	30° F	4"	63"/56"/39"	11 oz	1 lb 7 oz	6 x 12	XXS	5.6 L
			6'0"	30° F	4"	64"/56"/39"	12 oz	1 lb 8 oz	7 x 13	XS	6 L
	Tamarack	Semi Rec	6'6"	30° F	4"	65"/56"/39"	13 oz	1 lb 9 oz	7 x 13	XS	6.4 L
			5'0"	30° F	4"	58"/58"/33"	9 oz	19 oz	6 x 12	XXS	4.2 L
	AstraLite	Top Quilt (baffled)	5'8"	26° F	4.5"	up to 68"/38"	10.5 oz	16 oz	6 x 10	XXXXS	3.2 L
6'4"			26° F	4.5"	up to 68"/38"	11.25 oz	17.5 oz	6 x 10	XXXXS	3.1 L	
TerraLite	Semi Rec (Hooded)	5'6"	25° F	5"	65"/68"/42"	17 oz	1 lb 12 oz	6 x 12	XS	7.1 L	
		6'0"	25° F	5"	65"/68"/42"	18 oz	1 lb 13 oz	7 x 13	XS	7.9 L	
		6'6"	25° F	5"	65"/68"/42"	19 oz	1 lb 15 oz	7 x 13	XS	8.6 L	
UltraLite	Mummy (w/full collar)	7'0"	25° F	5"	65"/68"/42"	21.5 oz	2 lb 2 oz	7 x 13	XS	9.4 L	
		5'6"	20° F	5.5"	59"/51"/38"	15 oz	1 lb 12 oz	7 x 13	XS	7.5 L	
		6'0"	20° F	5.5"	59"/51"/38"	16 oz	1 lb 13 oz	7 x 13	XS	7.9 L	
AlpinLite	Mummy (w/full collar)	6'6"	20° F	5.5"	60"/52"/38"	17 oz	1 lb 15 oz	7 x 13	XS	8.6 L	
		5'6"	20° F	5.5"	63"/56"/39"	17 oz	1 lb 13 oz	7 x 13	XS	7.9 L	
		6'0"	20° F	5.5"	64"/55"/39"	19 oz	1 lb 15 oz	8 x 15	S	8.6 L	
VersaLite	Mummy (w/full collar)	6'6"	20° F	5.5"	65"/56"/39"	21 oz	2 lb 1 oz	8 x 15	S	9.4 L	
		7'0"	20° F	5.5"	65"/56"/39"	23 oz	2 lb 4 oz	8 x 15	S	9.8 L	
		5'6"	10° F	6.5"	62"/53"/39"	18 oz	1 lb 14 oz	8 x 15	S	8.3 L	
Caribou MF	Mummy (box stitched)	6'0"	10° F	6.5"	62"/53"/39"	20 oz	2 lb	8 x 15	S	9 L	
		6'6"	10° F	6.5"	63"/54"/39"	22 oz	2 lb 2 oz	8 x 15	S	9.8 L	
		5'6"	35° F	3.5"	63"/56"/39"	9 oz	1 lb 4 oz	6 x 12	XXS	4.5 L	
Alder MF	Semi Rec	6'0"	35° F	3.5"	64"/56"/39"	10 oz	1 lb 5 oz	6 x 12	XXS	4.9 L	
		6'6"	35° F	3.5"	65"/56"/39"	11 oz	1 lb 7 oz	6 x 12	XXS	5.6 L	
Sycamore MF	Semi Rec (Hooded)	6'0"	25° F	5"	62"/59"/46"	16 oz	1 lb 15 oz	7 x 13	XS	8.6 L	
		6'6"	25° F	5"	62"/59"/46"	18 oz	2 lb 1 oz	7 x 13	XS	9.4 L	
Ponderosa MF	Semi Rec	6'0"	25° F	5"	62"/59"/46"	17 oz	2 lb	8 x 15	S	9 L	
		6'6"	25° F	5"	62"/59"/46"	19 oz	2 lb 2 oz	8 x 15	S	9.8 L	
		7'0"	15° F	6.5"	67"/64"/48"	27 oz	2 lb 9 oz	8 x 17	M	12.3 L	
Apache MF	Mummy (w/full collar)	6'6"	15° F	6.5"	67"/64"/48"	29 oz	2 lb 11 oz	8 x 17	M	13.1 L	
		6'0"	15° F	6"	67"/64"/48"	31 oz	2 lb 14oz	8 x 17	M	14.2 L	
		5'6"	15° F	6"	59"/51"/38"	17 oz	1 lb 14 oz	8 x 15	S	8.3 L	
Badger MF	Mummy (w/full collar)	6'0"	15° F	6"	59"/51"/38"	19 oz	2 lb	8 x 15	S	9 L	
		6'6"	15° F	6"	60"/51"/38"	21 oz	2 lb 2 oz	8 x 15	S	9.8 L	
		7'0"	15° F	6"	64"/55"/41"	21 oz	2 lbs 1 oz	8 x 15	S	9.4 L	
Antelope MF	Mummy (w/full collar)	6'0"	15° F	6"	65"/56"/41"	23 oz	2 lb 4 oz	8 x 17	M	10.5 L	
		6'6"	15° F	6"	66"/57"/41"	25 oz	2 lb 7 oz	8 x 17	M	11.6 L	
		7'0"	15° F	6"	67"/58"/41"	27 oz	2 lb 10 oz	8 x 17	M	12.7 L	
Sequoia MF	Semi Rec (w/full collar)	5'6"	5° F	7"	62"/53"/39"	24 oz	2 lb 5 oz	8 x 17	M	10.9 L	
		6'0"	5° F	7"	62"/53"/39"	26 oz	2 lb 7 oz	8 x 17	M	11.6 L	
Kodiak MF	Mummy (w/full collar)	6'6"	5° F	7"	63"/54"/39"	28 oz	2 lb 9 oz	8 x 17	M	12.3 L	
		6'0"	0° F	7"	66"/61"/48"	33 oz	3 lb 4 oz	9 x 18	L	16.4 L	
		7'0"	0° F	7"	66"/61"/48"	36 oz	3 lb 7 oz	9 x 18	L	17.6 L	
Bristlecone MF	Semi Rec (w/full collar)	6'0"	0° F	7"	66"/57"/41"	30 oz	2 lb 12 oz	9 x 18	L	13.4 L	
		6'6"	0° F	7"	67"/58"/41"	32 oz	2 lb 15 oz	9 x 18	L	14.5 L	
		7'0"	0° F	7"	67"/58"/41"	34 oz	3 lb 1 oz	9 x 18	L	15.3 L	
Lynx MF	Mummy (w/full collar)	6'0"	-10° F	8.5"	69"/61"/48"	42 oz	3 lb 15 oz	10 x 20	XL	20.5 L	
		6'6"	-10° F	8.5"	69"/61"/48"	45 oz	4 lb 3 oz	10 x 20	XL	22 L	
		5'6"	-10° F	8.5"	61"/54"/39"	30 oz	3 lb	9 x 18	L	14.9 L	
Puma MF	Mummy (w/full collar)	6'0"	-10° F	8.5"	62"/54"/39"	32 oz	3 lb 2 oz	9 x 18	L	15.7 L	
		6'6"	-10° F	8.5"	63"/55"/39"	34 oz	3 lb 5 oz	9 x 18	L	16.8 L	
		5'6"	-25° F	9.5"	62"/55"/39"	33 oz	3 lb 4 oz	9 x 18	L	16.4 L	
Apache GWS	Mummy (w/full collar)	6'0"	-25° F	9.5"	64"/56"/39"	36 oz	3 lb 7 oz	10 x 20	XL	17.6 L	
		6'6"	-25° F	9.5"	66"/57"/39"	39 oz	3 lb 10 oz	10 x 20	XL	18.7 L	
		6'0"	15° F	6"	59"/51"/38"	17 oz	2 lb 4 oz	8 x 15	S	10.5 L	
Badger GWS	Mummy (w/full collar)	6'0"	15° F	6"	59"/51"/38"	19 oz	2 lb 6 oz	8 x 15	S	11.2 L	
		6'6"	15° F	6"	60"/52"/38"	21 oz	2 lb 8 oz	8 x 15	S	12 L	
		7'0"	15° F	6"	65"/56"/41"	23 oz	2 lb 10 oz	8 x 17	M	12.7 L	
Antelope GWS	Mummy (w/full collar)	6'6"	15° F	6"	66"/57"/41"	25 oz	2 lb 13 oz	8 x 17	M	13.8 L	
		6'0"	5° F	7"	67"/58"/41"	27 oz	3 lb	8 x 17	M	14.9 L	
		5'6"	5° F	7"	62"/53"/39"	24 oz	2 lb 10 oz	8 x 17	M	12.7 L	
Sequoia GWS	Semi Rec (w/full collar)	6'0"	5° F	7"	62"/53"/39"	26 oz	2 lb 13 oz	9 x 18	L	13.8 L	
		6'6"	5° F	7"	63"/54"/39"	28 oz	2 lb 15 oz	9 x 18	L	14.5 L	
		6'0"	5° F	7"	66"/61"/48"	33 oz	3 lb 10 oz	9 x 18	L	18.7 L	
Kodiak GWS	Mummy (w/full collar)	6'6"	5° F	7"	66"/61"/48"	36 oz	3 lb 13 oz	10 x 20	XL	19.8 L	
		6'0"	0° F	7"	66"/57"/41"	30 oz	3 lb 2 oz	9 x 18	L	15.7 L	
		7'0"	0° F	7"	67"/58"/41"	32 oz	3 lb 5 oz	9 x 18	L	16.8 L	
Lynx GWS	Mummy (w/full collar)	6'0"	0° F	7"	67"/58"/41"	34 oz	3 lb 8 oz	9 x 18	L	17.9 L	
		5'6"	-10° F	8.5"	61"/54"/39"	30 oz	3 lb 5 oz	9 x 18	L	16.8 L	
		6'0"	-10° F	8.5"	62"/54"/39"	32 oz	3 lb 8 oz	9 x 18	L	17.9 L	
Puma GWS	Mummy (w/full collar)	6'6"	-10° F	8.5"	63"/55"/39"	34 oz	3 lb 11 oz	10 x 20	XL	19 L	
		5'6"	-25° F	9.5"	62"/55"/39"	34 oz	3 lb 9 oz	9 x 18	L	18.3 L	
		6'0"	-25° F	9.5"	64"/56"/39"	37 oz	3 lb 12 oz	10 x 20	XL	19.4 L	
Cypress GWS	Semi Rec (w/full collar)	6'6"	-25° F	9.5"	66"/57"/39"	40 oz	3 lb 15 oz	10 x 20	XL	20.5 L	
		6'0"	-30° F	11"	69"/61"/48"	50 oz	4 lb 14 oz	11 x 22	XXL	26.1 L	
		6'6"	-30° F	11"	69"/61"/48"	52 oz	5 lb	11 x 22	XXL	26.8 L	
Bison GWS	Mummy (w/full collar)	6'0"	-40° F	11"	64"/55"/39"	42 oz	4 lb 10 oz	11 x 22	XXL	24.6 L	
		6'6"	-40° F	11"	64"/55"/39"	45 oz	4 lb 13 oz	11 x 22	XXL	25.7 L	

* Min Vol is the smallest packed volume by ASTM F1853-11 standard test method for measuring compressed volume.

	Model	Shape	Size	Rating	Loft	shdr/hip/foot (cm)	Fill Wt. (g)	Total Wt. (g)	Stuff size (cm)	Sack Size	*Min Vol (L)
Extremelite™ Series	EverLite	Tapered (box stitched)	180cm	7° C	7.5cm	152/140/99	185	410	13 x 25	XXXXS	2.5 L
			200cm	7° C	7.5cm	165/152/107	225	495	13 x 25	XXXXS	3.6 L
	MityLite	Semi Rec	190cm	4° C	7.5cm	157/150/117	340	735	15 x 30	XXS	6.7 L
	NanoLite	Top Quilt (baffled)	172cm	3° C	9cm	up to 172/97	184	312	13 x 25	XXXXS	1.9 L
			192cm	3° C	9cm	up to 172/97	206	354	13 x 25	XXXXS	1.5 L
	HighLite	Mummy (box stitched)	165cm	2° C	9cm	150/130/97	200	425	15 x 25	XXXXS	2.7 L
			180cm	2° C	9cm	150/130/97	225	455	15 x 30	XXS	3.1 L
			200cm	2° C	9cm	152/132/97	255	480	15 x 30	XXS	3.4 L
	SummerLite	Mummy	165cm	0° C	10cm	150/130/97	225	510	15 x 30	XXS	3.8 L
			180cm	0° C	10cm	150/130/97	255	540	15 x 30	XXS	4.2 L
			200cm	0° C	10cm	152/132/97	285	595	15 x 30	XXS	4.9 L
	MegaLite	Mummy (w/ top collar)	165cm	-2° C	10cm	160/142/99	310	650	15 x 30	XXS	5.6 L
			180cm	-2° C	10cm	163/142/99	340	680	18 x 33	XS	6 L
			200cm	-2° C	10cm	165/142/99	370	710	18 x 33	XS	6.4 L
	Tamarack	Semi Rec	150cm	-2° C	10cm	147/147/84	255	540	15 x 30	XXS	4.2 L
	Astralite	Top Quilt (baffled)	172cm	-3° C	11.5cm	up to 172/97	298	454	15 x 25	XXXXS	3.2 L
			192cm	-3° C	11.5cm	up to 172/97	319	496	15 x 25	XXXXS	3.1 L
	TerraLite	Semi Rec (Hooded)	165cm	-4° C	13cm	165/173/107	480	780	18 x 33	XS	7.1 L
180cm			-4° C	13cm	165/173/107	510	820	18 x 33	XS	7.9 L	
200cm			-4° C	13cm	165/173/107	540	880	18 x 33	XS	8.6 L	
215cm			-4° C	13cm	165/173/107	590	960	18 x 33	XS	9.4 L	
UltraLite	Mummy (w/ full collar)	165cm	-7° C	14cm	150/130/97	425	795	18 x 33	XS	7.5 L	
		180cm	-7° C	14cm	150/130/97	455	820	18 x 33	XS	7.9 L	
		200cm	-7° C	14cm	152/132/97	480	880	18 x 33	XS	8.6 L	
AlpinLite	Mummy (w/ full collar)	165cm	-7° C	14cm	160/142/99	480	820	18 x 33	XS	7.9 L	
		180cm	-7° C	14cm	163/140/99	540	880	20 x 38	S	8.6 L	
		200cm	-7° C	14cm	165/142/99	595	935	20 x 38	S	9.4 L	
		215cm	-7° C	14cm	165/142/99	650	995	20 x 38	S	9.8 L	
VersaLite	Mummy (w/full collar)	165cm	-12° C	17cm	157/135/99	510	850	20 x 38	S	8.3 L	
		180cm	-12° C	17cm	157/135/99	565	905	20 x 38	S	9 L	
		200cm	-12° C	17cm	160/137/99	625	965	20 x 38	S	9.8 L	
MICROLITE XP™ Microfiber Series	Caribou MF	Mummy (box stitched)	165cm	2° C	9cm	160/142/99	255	565	15 x 30	XXS	4.5 L
			180cm	2° C	9cm	163/142/99	285	595	15 x 30	XXS	4.9 L
			200cm	2° C	9cm	165/142/99	310	650	15 x 30	XXS	5.6 L
	Alder MF	Semi Rec	180cm	-4° C	13cm	157/150/117	455	880	18 x 33	XS	8.6 L
			200cm	-4° C	13cm	157/150/117	510	935	18 x 33	XS	9.4 L
	Sycamore MF	Semi Rec (Hooded)	180cm	-4° C	13cm	157/150/117	480	905	20 x 38	S	9 L
			200cm	-4° C	13cm	157/150/117	540	965	20 x 38	S	9.8 L
	Ponderosa MF	Semi Rec	180cm	-9° C	17cm	170/163/122	765	1160	20 x 43	M	12.3 L
			200cm	-9° C	17cm	170/163/122	820	1220	20 x 43	M	13.1 L
			215cm	-9° C	17cm	170/163/122	880	1305	20 x 43	M	14.2 L
	Apache MF	Mummy (w/ full collar)	165cm	-9° C	15cm	150/130/97	480	850	20 x 38	S	8.3 L
			180cm	-9° C	15cm	150/130/97	540	905	20 x 38	S	9 L
			200cm	-9° C	15cm	152/130/97	595	965	20 x 38	S	9.8 L
	Badger MF	Mummy (w/ full collar)	165cm	-9° C	15cm	163/140/104	595	935	20 x 38	S	9.4 L
			180cm	-9° C	15cm	165/142/104	650	1020	20 x 43	M	10.5 L
			200cm	-9° C	15cm	168/145/104	710	1105	20 x 43	M	11.6 L
			215cm	-9° C	15cm	170/147/104	765	1190	20 x 43	M	12.7 L
	Antelope MF	Mummy (w/ full collar)	165cm	-15° C	18cm	157/135/99	680	1050	20 x 43	M	10.9 L
180cm			-15° C	18cm	157/135/99	735	1105	20 x 43	M	11.6 L	
200cm			-15° C	18cm	160/137/99	795	1160	20 x 43	M	12.3 L	
Sequoia MF	Semi Rec (w/ full collar)	180cm	-15° C	18cm	168/155/122	935	1475	23 x 46	L	16.4 L	
		200cm	-15° C	18cm	168/155/122	1020	1560	23 x 46	L	17.6 L	
Kodiak MF	Mummy (w/ full collar)	180cm	-18° C	18cm	168/145/104	850	1245	23 x 46	L	13.4 L	
		200cm	-18° C	18cm	170/147/104	905	1330	23 x 46	L	14.5 L	
		215cm	-18° C	18cm	170/147/104	965	1390	23 x 46	L	15.3 L	
Bristlecone MF	Semi Rec (w/ full collar)	180cm	-23° C	22cm	175/155/122	1190	1785	25 x 50	XL	20.5 L	
		200cm	-23° C	22cm	175/155/122	1275	1900	25 x 50	XL	22 L	
Lynx MF	Mummy (w/ full collar)	165cm	-23° C	22cm	155/137/99	850	1360	23 x 46	L	14.9 L	
		180cm	-23° C	22cm	157/137/99	905	1415	23 x 46	L	15.7 L	
		200cm	-23° C	22cm	160/140/99	965	1500	23 x 46	L	16.8 L	
Puma MF	Mummy (w/ full collar)	165cm	-32° C	24cm	157/140/99	935	1475	23 x 46	L	16.4 L	
		180cm	-32° C	24cm	163/142/99	1020	1560	25 x 50	XL	17.6 L	
		200cm	-32° C	24cm	168/145/99	1105	1645	25 x 50	XL	18.7 L	
Gore Windstopper™ Series	Apache GWS	Mummy (w/ full collar)	165cm	-9° C	15cm	150/130/97	480	1020	20 x 38	S	10.5 L
			180cm	-9° C	15cm	150/130/97	540	1075	20 x 38	S	11.2 L
			200cm	-9° C	15cm	152/132/97	595	1135	20 x 38	S	12 L
	Badger GWS	Mummy (w/ full collar)	180cm	-9° C	15cm	165/142/104	650	1190	20 x 43	M	12.7 L
			200cm	-9° C	15cm	168/145/104	710	1275	20 x 43	M	13.8 L
			215cm	-9° C	15cm	170/147/104	765	1360	20 x 43	M	14.9 L
	Antelope GWS	Mummy (w/ full collar)	165cm	-15° C	18cm	157/135/99	680	1190	20 x 43	M	12.7 L
			180cm	-15° C	18cm	157/135/99	735	1275	23 x 46	L	13.8 L
			200cm	-15° C	18cm	160/137/99	795	1330	23 x 46	L	14.5 L
	Sequoia GWS	Semi Rec (w/ full collar)	180cm	-15° C	18cm	168/155/122	935	1645	23 x 46	L	18.7 L
			200cm	-15° C	18cm	168/155/122	1020	1730	25 x 50	XL	19.8 L
	Kodiak GWS	Mummy (w/ full collar)	180cm	-18° C	18cm	168/145/104	850	1415	23 x 46	L	15.7 L
			200cm	-18° C	18cm	170/147/104	905	1500	23 x 46	L	16.8 L
			215cm	-18° C	18cm	170/147/104	965	1590	23 x 46	L	17.9 L
	Lynx GWS	Mummy (w/ full collar)	165cm	-23° C	22cm	155/137/99	850	1500	23 x 46	L	16.8 L
			180cm	-23° C	22cm	157/137/99	905	1590	23 x 46	L	17.9 L
			200cm	-23° C	22cm	160/140/99	965	1670	25 x 50	XL	19 L
	Puma GWS	Mummy (w/ full collar)	165cm	-32° C	24cm	157/140/99	965	1615	23 x 46	L	18.3 L
180cm			-32° C	24cm	163/142/99	1050	1700	25 x 50	XL	19.4 L	
200cm			-32° C	24cm	168/145/99	1135	1785	25 x 50	XL	20.5 L	
Cypress GWS	Semi Rec (w/ full collar)	180cm	-34° C	28cm	175/155/122	1415	2210	28 x 56	XXL	26.1 L	
		200cm	-34° C	28cm	175/155/122	1475	2265	28 x 56	XXL	26.8 L	
Bison GWS	Mummy (w/ full collar)	180cm	-40° C	28cm	163/ 140/99	1190	2095	28 x 56	XXL	24.6 L	
		200cm	-40° C	28cm	163/ 140/99	1275	2180	28 x 56	XXL	25.7 L	

* Min Vol is the smallest packed volume by ASTM F1853-11 standard test method for measuring compressed volume.

PRSR STD
U.S. POSTAGE
PAID
CAMPBELL, CA
PERMIT NO. 237

\$1.00

Western Mountaineering

1025 South 5th Street
San Jose, CA 95112. USA
Tel: 1.408.287.8944

www.westernmountaineering.com

Cover Photo: Zion Park from Lloyd Chambers © DIGLLOYD 2018